

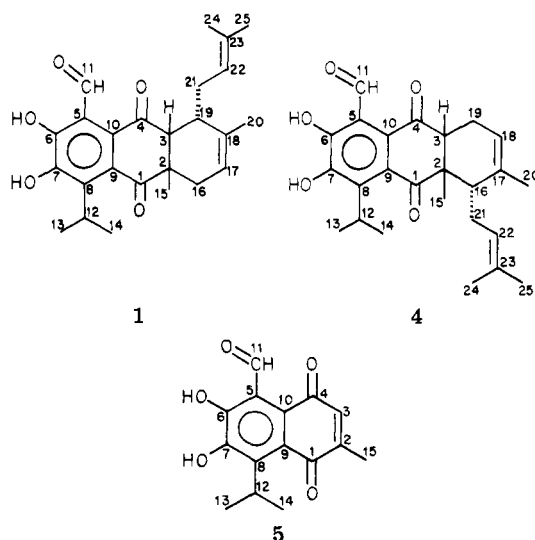
CORRECTIONS

HERBICIDE AND INSECTICIDE RESIDUES IN
TAILWATER PITS: WATER AND PIT BOTTOM SOIL
FROM IRRIGATED CORN AND SORGHUM FIELDS

Ahmed M. Kadoum and Donald E. Mock. *J. Agric. Food Chem.* 26, 45 (1978). On page 48, in eighth from last line, replace (0.001 kg/ha) with (0.010 kg/ha); on page 48, in last line, replace (0.18 kg/ha) with (1.10 kg/ha); on page 49, Table VIII, last line of footnote *b*, replace 0.184 kg/hectare with 1.123 kg/hectare.

HELIOCIDE H₁. A NEW INSECTICIDAL C₂₅
TERPENOID FROM COTTON (*GOSSYPIMUM*
HIRSUTUM)

Robert D. Stipanovic, Alois A. Bell, Daniel H. O'Brien, and Maurice J. Lukefahr. *J. Agric. Food Chem.* 26, 115 (1978). On page 117, incorrect structures for compounds 1, 4, and 5 in Scheme I were given. The correct structures are as shown below:

TISSUE RESIDUE STUDIES ON TOXAPHENE IN
BROILER CHICKENS

Parshall B. Bush, Michael Tanner, John T. Kiker, R. K. Page, Nicholas H. Booth, and O. J. Fletcher. *J. Agric. Food Chem.* 26, 126 (1978). On page 128, the last paragraph in column 1 should read: "If an 8-week-old bird contains approximately 10% fat (Edwards et al., 1973), then a residue level of 80 ppm would be expected in the adipose tissue. Birds fed 4 ppm actually contain 21 ppm toxaphene. Thus, only 26.25% of consumed toxaphene is accounted for in the adipose tissue of the birds. Toxaphene accumulates to a level of four to five times that in the feed, but this still accounts for only 26.25% of the toxaphene consumed as compared to 100% for HCB (Reed et al., 1977a,b) and 50% of the polychlorinated biphenyls (Britton and Charles, 1974).

SELENIUM AND ARSENIC LEVELS IN SOYBEANS
FROM DIFFERENT PRODUCTION REGIONS OF THE
UNITED STATES

R. D. Wauchope. *J. Agric. Food Chem.* 26, 226 (1978). The suggestions on possible reasons for high selenium levels in Mississippi "Delta" soils should have been cited (P. C. Quimby, personal communication). In addition, the Acknowledgments section should have included P. C. Quimby, for interesting the author in Se levels in these soils, and for helpful discussion.